

Standard ERP Integration



Description

Get access to your vital ERP information from within SuperOffice CRM!

Let daily data transfers keep your customer data in SuperOffice up-to-date.

Bring ERP information like invoices, key figures and other details directly into the SuperOffice interface.

Avoid having both SuperOffice and your ERP application running. Find all the information you need in SuperOffice.

Obtain a much better overview when you are looking for information about your customer in SuperOffice.

Information

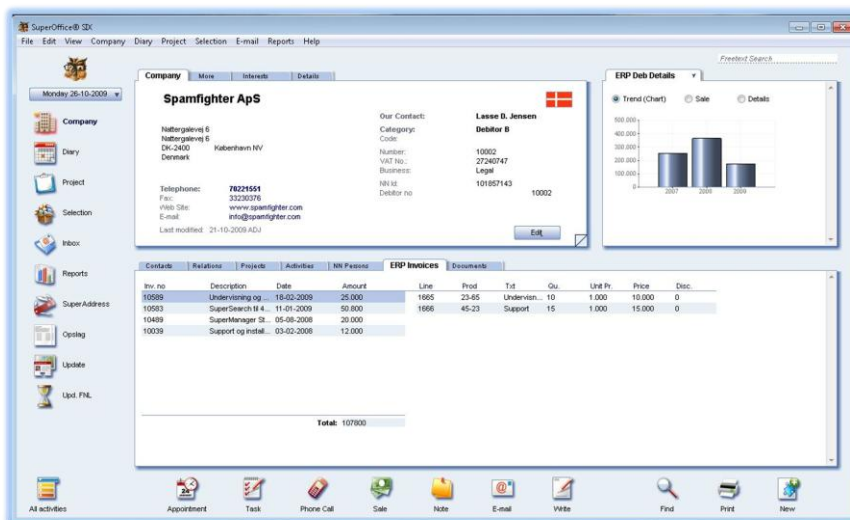
This SIS Solution consists of:

- Pre-built data transfer
- Invoices web panel w. invoice lines
- Debtor details in MiniCard

To use this SIS Solution you must purchase a license key for StudioIntegrator and StudioDesigner. See the pricing on www.siteshop.dk.

This SIS Solution can easily be installed by your SuperOffice reseller.

Contact your SuperOffice reseller for additional information.



What is a SIS Solution?

A SIS Solution is a package of ready-to-use *Forms, Data Transfer Jobs, Reports, Searches or Data Sets* that we have built using Siteshop Information Studio.

The advantage of a pre-built Solution is minimized time and cost during the implementation.

A SIS Solution can be adjusted and tweaked based on your specifications but more time will then be added during implementation.



Learn more on
www.siteshop.dk